

Green and Effective



PV Grid-Connected Inverters 2010~2011

About Sungrow

SUNGROW POWER SUPPLY CO., LTD specializes in the design and manufacture of inverters for both photovoltaic (PV) and wind power generating systems. We fully recognize that the inverters is one of the key elements affecting the performance and energy output of PV and wind systems. Continuous and heavy investments have been placed in research, development, manufacturing, and marketing of a wide range of high-quality efficient inverters around the world. In order to achieve our goals, we at SUNGROW continue to look for ways to improve our services and technical capabilities to meet the needs of our clients and the markets.

ABOUT US

Founded in 1997 by Mr. Renxian Cao, a former university professor, SUNGROW POWER SUPPLY CO., LTD has grown into a reputable renewable energy enterprise after a decade of development. In July 2007, we successfully introduced foreign investment and received a domestic capital injection of RMB 60 million, transforming SUNGROW into an international joint venture enterprise. Our major products include a thorough and growing series of grid-connected residential and commercial PV and wind system inverters as well as a line of renewable energy power supplies.

Headquartered in Anhui, China, SUNGROW has expanded to Paris, France with imminent plans in the US. With over 380 megawatts of grid-connected inverters systems installed in China, Italy, Spain and South Korea, etc., SUNGROW is undeniably the leading Chinese vendor in the inverters market. We are wellpositioned in the ever-growing renewable energy market with our proven competitive products. Growing with the sun, SUNGROW has become a dynamic company with competitive R&D and design teams able to respond seamlessly to customer demands and implement product innovations as the industry advances.

MISSION OF SUNGROW

As a leading specialist in inverters technology and material, SUNGROW is committed to research, development, manufacturing, and marketing of innovative and superb renewable energy products that meet and surpass international standards and customer demands worldwide. SUNGROW is also committed to social responsibility through energy conservation, reduction of greenhouse gas emission, environmental protection, and the promotion of public awareness.



Sun Access Inverters

SG 3KTL

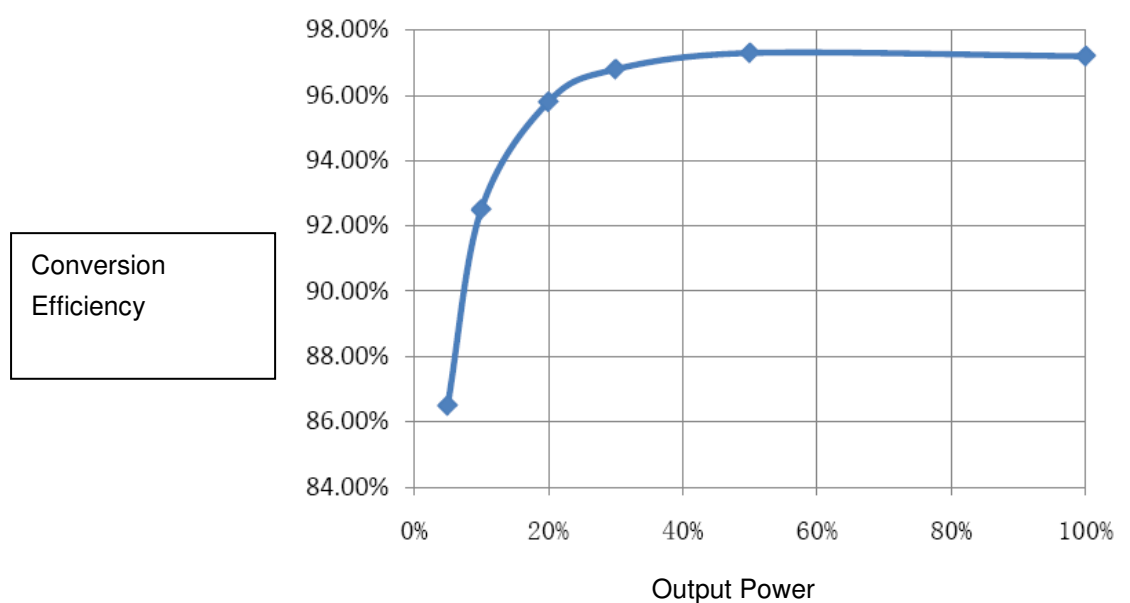


Features:

- Max. efficiency at 97.3%
- Weather-proof design (IP54) for harshest working environment
- MPPT efficiency > 99.9%
- Easy-setting multilingual LCD display panel
- Multiple communication interfaces
- High reliability with full protective functions
- Wide DC input voltage range
- Compact and design weight with high quality aluminium housing
- Max. working altitude at 6000m
- Water-proof direct plug-in terminals
- TüV certification, VDE 0126-1-1 Comp liant



Efficiency Curve:

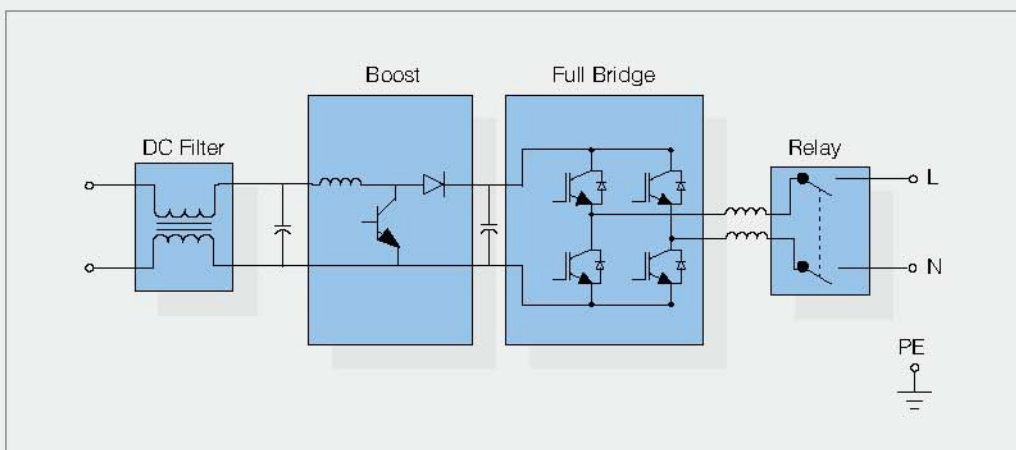


Technical Specifications:

	SG 3KTL
DC SIDE DATA	
Max. DC Voltage	550Vdc
MPP Voltage Range	150~450Vdc
Max. DC Power	3300Wp
Max. Input Current	18A
Max. Number of String	3
AC SIDE DATA	
Rated Output Power	3000W
Rated Grid Voltage	230Vac
Grid Voltage Range	180~260Vac
Rated Grid Frequency	50Hz/60Hz
Grid Frequency Range	47~51.5Hz/57~61.5Hz
Output Current THD	< 3% (at nominal power)
Power Factor	≥0.99 (at nominal power)
SYSTEM	
Max. Efficiency	97.3%
Euro. Efficiency	96.2%
Protection Degree	IP54 (outdoor)
Power Consumption at Night	0W
Operating Temperature	-25~+60°C
Cooling Method	controlled forced-air cooling
Relative Humidity	0~95%, non-condensing
Max. Working Altitude	6000m
DISPLAY AND COMMUNICATIONS	
Display	LCD
Standard Comm. Interfaces	RS485
Optional Comm. Interfaces	Ethernet/GPRS/blue tooth
MECHANICAL DATA	
Dimensions (WxHxD)	415x530x176mm
Weight	26kg



Circuit Diagram:



Sun Access Inverters

SG 4KTL



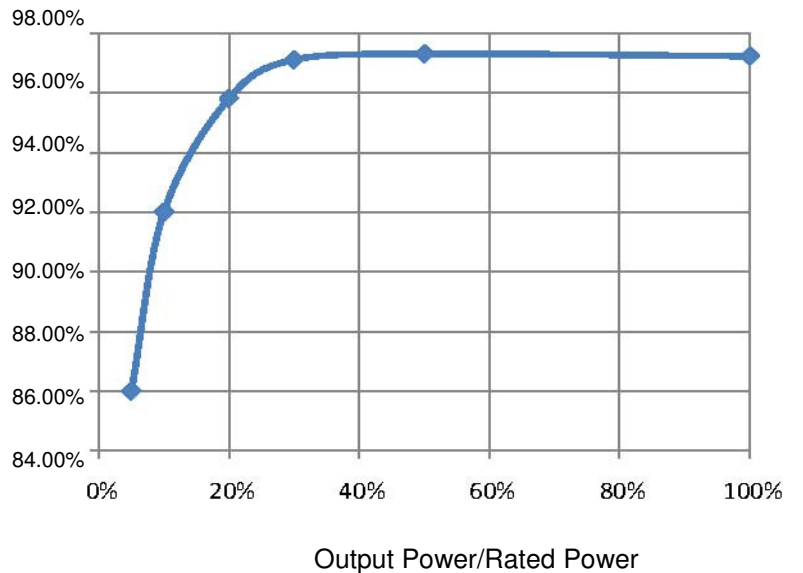
Features:

- Max. efficiency at 97.3%
- Weather-proof design (IP54) for harshest working environment
- MPPT efficiency > 99.9%
- Easy-setting multilingual LCD display panel
- Multiple communication interfaces
- High reliability with full protective functions
- Wide DC input voltage range
- Compact and design weight with high quality aluminium housing
- Max. working altitude at 6000m
- Water-proof direct plug-in terminals
- TüV certification, VDE 0126-1-1 Comp liant



Efficiency Curve:

Conversion Efficiency

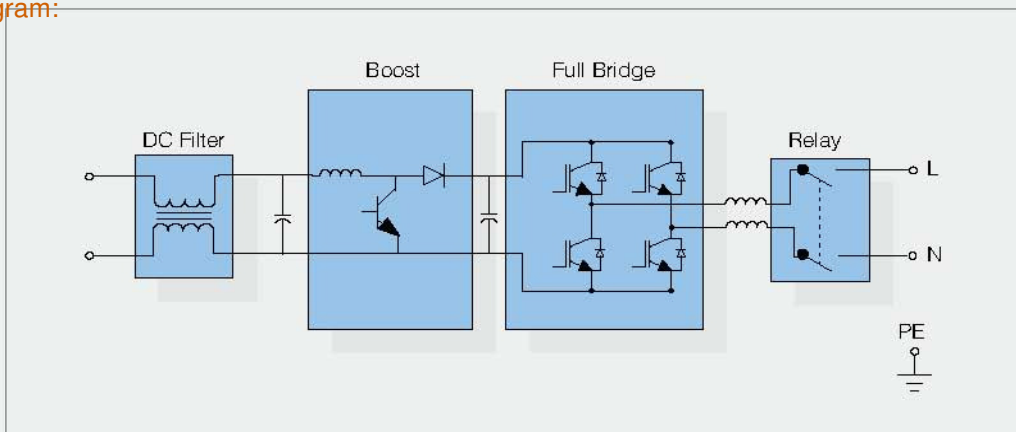


Technical Specifications:

DC SIDE DATA	SG 4KTL
Max. DC Voltage	550Vdc
MPP Voltage Range	150~450Vdc
Max. DC Power	4400Wp
Max. Input Current	20A
Max. Number of String	3
AC SIDE DATA	
Rated Output Power	4000W
Rated Grid Voltage	230Vac
Grid Voltage Range	180~260Vac
Rated Grid Frequency	50Hz/60Hz
Grid Frequency Range	47~51.5Hz/57~61.5Hz
Output Current THD	< 3% (at nominal power)
Power Factor	≥0.99 (at nominal power)
SYSTEM	
Max. Efficiency	97.3%
Euro. Efficiency	96.5%
Protection Degree	IP54 (outdoor)
Power Consumption at Night	0W
Operating Temperature	-25~+60°C
Cooling Method	controlled forced-air cooling
Relative Humidity	0~95%, non-condensing
Max. Working Altitude	6000m
DISPLAY AND COMMUNICATIONS	
Display	LCD
Standard Comm. Interfaces	RS485
Optional Comm. Interfaces	Ethernet/GPRS/blue tooth
MECHANICAL DATA	
Dimensions (WxHxD)	415x530x176mm
Weight	27kg



Circuit Diagram:



Sun Access Inverters

SG 50K3

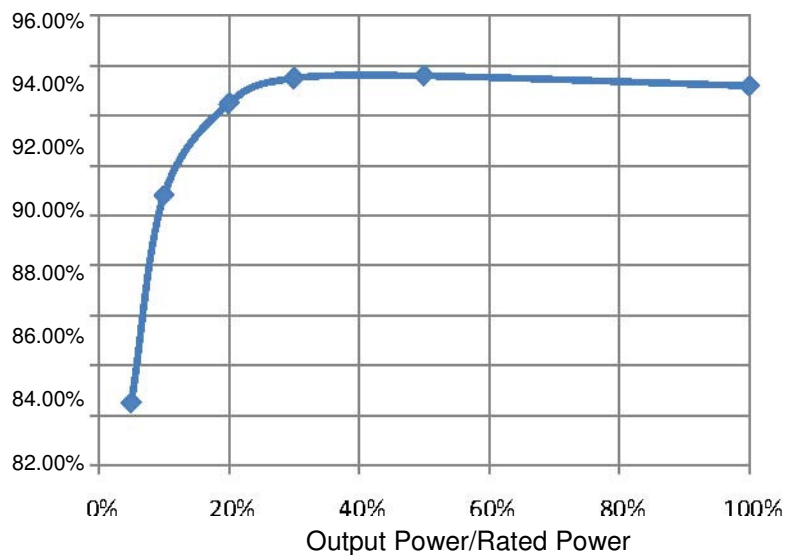
Features:

- MPPT efficiency > 99.9%
- Intelligent Power Module guarantees high reliability
- Complete protective functions
- Easy-setting multilingual LCD display panel
- Multiple communication interfaces
- Wide DC input voltage range with max. 1000V (optional)
- Simplified installation&maintenance design
- Auxiliary heater (optional)
- Max. working altitude at 6000m
- CE, KEMA DK5940 certifications



Efficiency Curve:

Conversion Efficiency

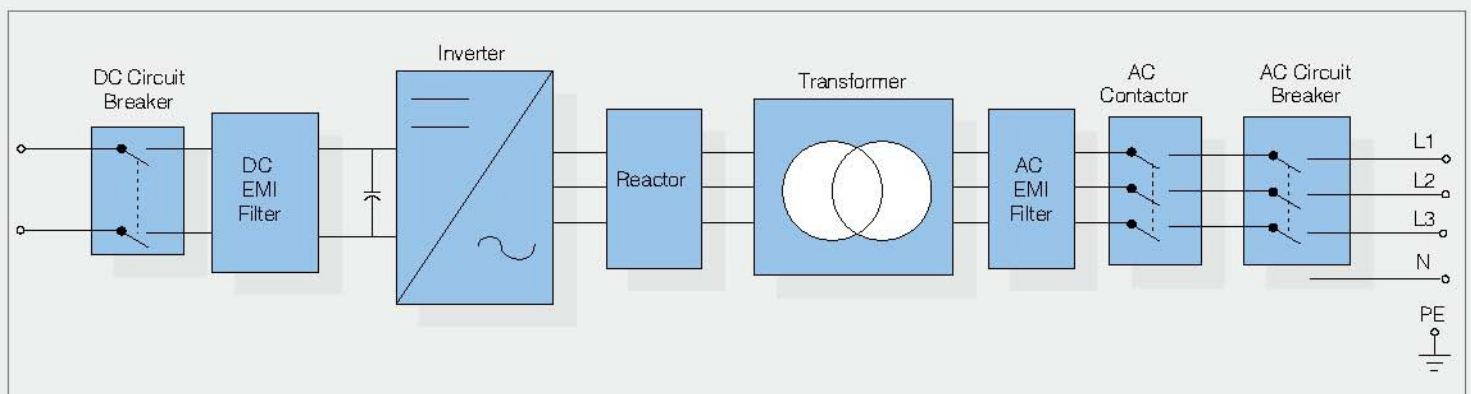


Technical Specifications:

	SG 50K3
DC SIDE DATA	
Max. DC Voltage	880Vdc
MPP Voltage Range	450~820Vdc
Max. DC Power	55kWp
Max. Input Current	130A
Max. Number of String	2
AC SIDE DATA	
Rated Output Power	50kW
Rated Grid Voltage	400Vac
Grid Voltage Range	310-450Vac
Rated Grid Frequency	50Hz/60Hz
Grid Frequency Range	47~51.5Hz/57~61.5Hz
Output Current THD	< 3% (at nominal power)
Power Factor	≥0.99 (at nominal power)
SYSTEM	
Max. Efficiency	95.5% (with transformer)
Euro. Efficiency	94.8% (with transformer)
Protection Degree	IP20 (indoor)
Power Consumption at Night	<30W
Operating Temperature	-25~+55°C
Cooling Method	controlled forced-air cooling
Relative Humidity	0~95%, non-condensing
Max. Working Altitude	6000m
DISPLAY AND COMMUNICATIONS	
Display	LCD
Standard Comm. Interfaces	RS485
Optional Comm. Interfaces	Ethernet/GPRS
MECHANICAL DATA	
Dimensions (WxHxD)	820x1964x646mm
Weight	700kg



Circuit Diagram:



Sun Access Inverters

SG 100K3



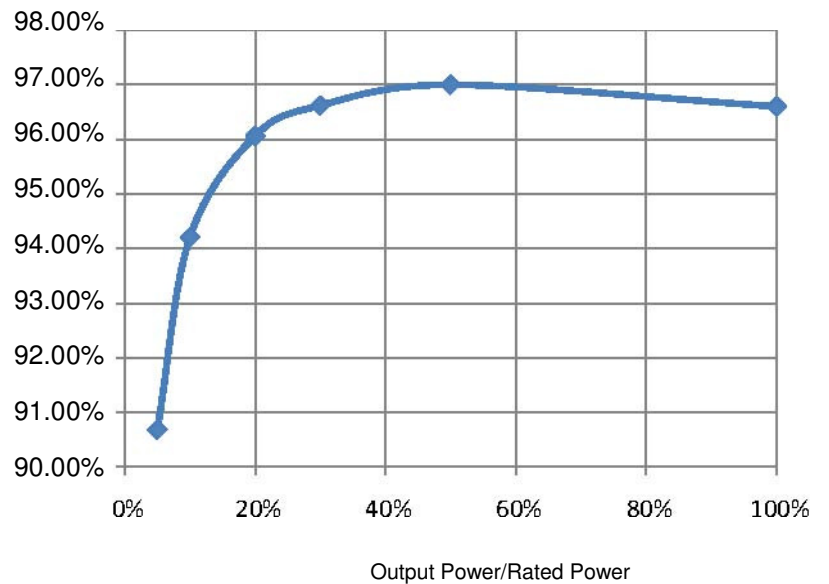
Features:

- Wide DC input voltage range with max. 1000V (optional)
- Max. efficiency at 97.0%
- MPPT efficiency > 99.9%
- Using advanced IGBT modules
- Full protective functions
- Easy Installation and maintenance
- Precise output power metering
- Multilingual LCD display & multiple communication interfaces
- Auxiliary heater (optional)
- Max. working altitude at 6000m
- Low voltage ride through, reactive and active power control
- KEMA DK5940, TÜV CE certifications

]

Efficiency Curve:

Conversion Efficiency

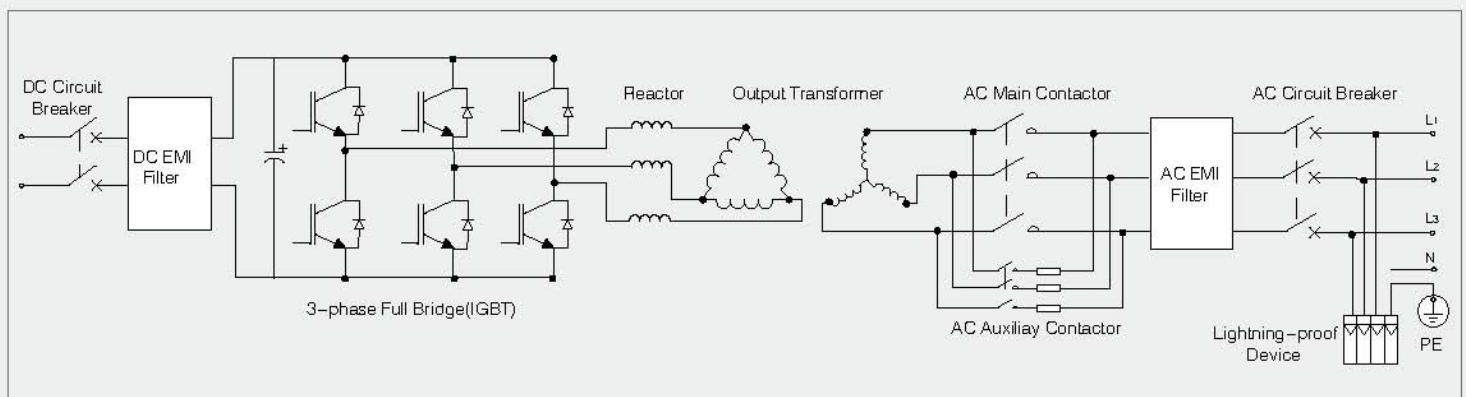


Technical Specifications:

	SG 100K3
DC SIDE DATA	
Max. DC Voltage	880Vdc
MPP Voltage Range	450~820Vdc
Max. DC Power	110kWp
Max. Input Current	250A
Max. Number of String	6
AC SIDE DATA	
Rated Output Power	100kW
Rated Grid Voltage	400Vac
Grid Voltage Range	310~450Vac
Rated Grid Frequency	50Hz/60Hz
Grid Frequency Range	47~51.5Hz/57~61.5Hz
Output Current THD	< 3% (at nominal power)
Power Factor	≥0.99 (at nominal power)
SYSTEM	
Max. Efficiency	97.0% (with transformer)
Euro. Efficiency	96.4% (with transformer)
Protection Degree	IP20 (indoor)
Power Consumption at Night	<30W
Operating Temperature	-25~+55°C
Cooling Method	controlled forced-air cooling
Relative Humidity	0~95%, non-condensing
Max. Working Altitude	6000m
DISPLAY AND COMMUNICATIONS	
Display	LCD
Standard Comm. Interfaces	RS485
Optional Comm. Interfaces	Ethernet/GPRS
MECHANICAL DATA	
Dimensions (WxHxD)	1020x1964x770mm
Weight	900kg



Circuit Diagram:



Sun Access Inverters

SG 250K3

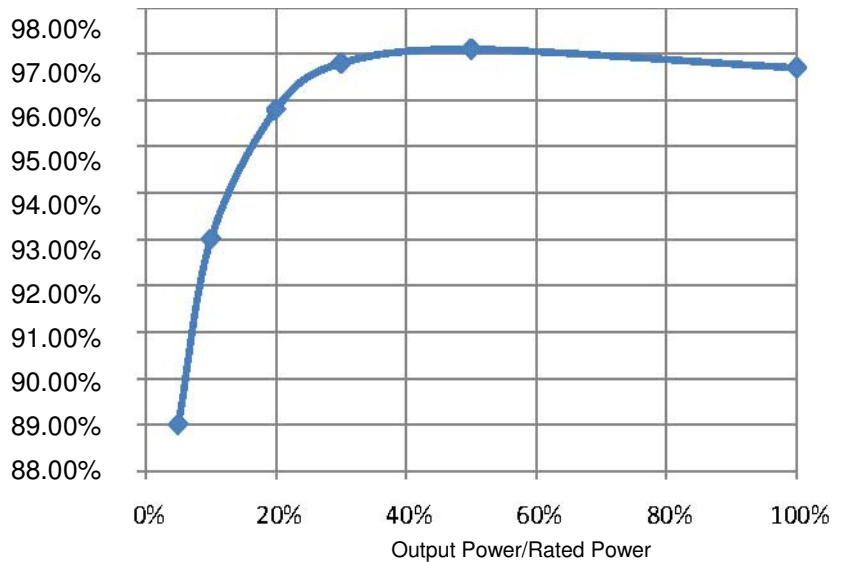
Features:

- Wide DC input voltage range with max. 1000V (optional)
- MPPT efficiency > 99.9%
- TFT LCD touch screen
- Using advanced IGBT modules
- Max. efficiency at 97.1%
- Full protective functions
- Easy Installation and maintenance
- Multilingual touch screen monitoring and control interface
- Suitable for harsh grid environment
- Auxiliary heater (optional)
- Max. working altitude at 6000m
- High quality german brand enclosure
- Low voltage ride through, reactive and active power control
- KEMA DK5940, CE certifications



Efficiency Curve:

Conversion Efficiency

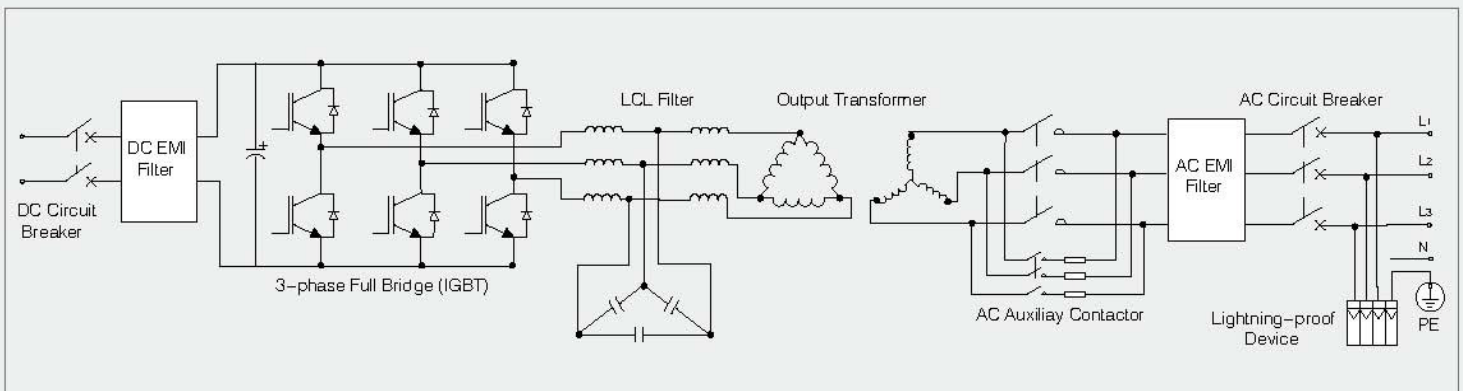


Technical Specifications:

	SG 250K3
DC SIDE DATA	
Max. DC Voltage	880Vdc
MPP Voltage Range	450~820Vdc
Max. DC Power	275kWp
Max. Input Current	600A
Max. Number of String	8
AC SIDE DATA	
Rated Output Power	250kW
Rated Grid Voltage	400Vac
Grid Voltage Range	310~450Vac
Rated Grid Frequency	50Hz/60Hz
Grid Frequency Range	47~51.5Hz/57~61.5Hz
Output Current THD	< 3% (at nominal power)
Power Factor	≥0.99 (at nominal power)
SYSTEM	
Max. Efficiency	97.1% (with transformer)
Euro. Efficiency	96.5% (with transformer)
Protection Degree	IP20 (indoor)
Power Consumption at Night	<100W
Operating Temperature	-25~+55°C
Cooling Method	controlled forced-air cooling
Relative Humidity	0~95%, non-condensing
Max. Working Altitude	6000m
DISPLAY AND COMMUNICATIONS	
Display	touch screen LCD
Standard Comm. Interfaces	RS485
Optional Comm. Interfaces	Ethernet/GPRS
MECHANICAL DATA	
Dimensions (WxHxD)	2400x2180x850mm
Weight	1700kg



Circuit Diagram:



Sun Access Inverters

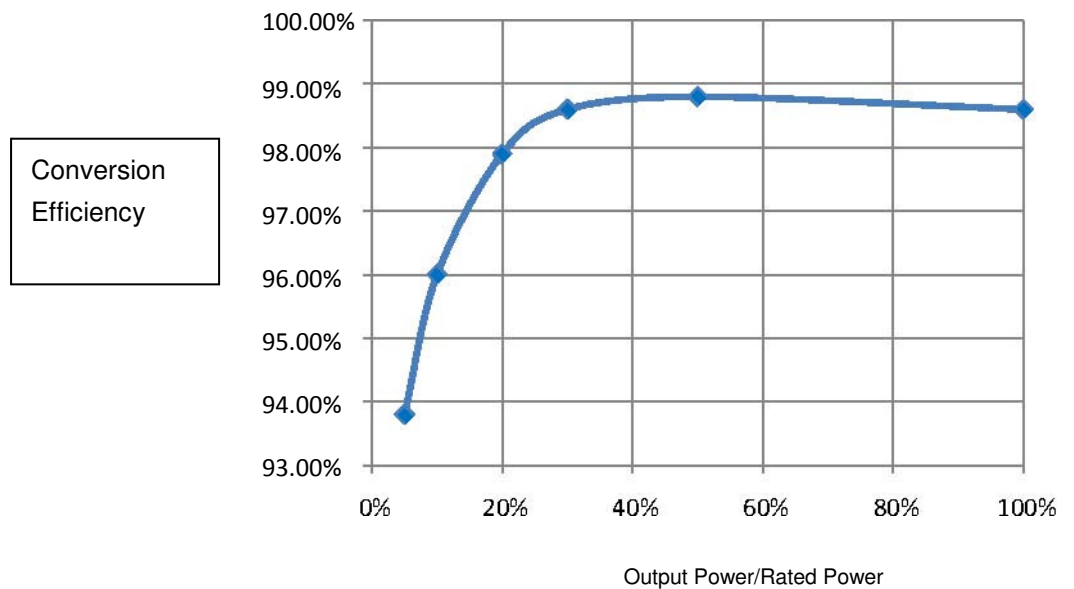
SG 500KTL

Features:

- Transformerless design with max. efficiency at 98.7%
- Wide DC input voltage range with max. 1000V (optional)
- MPPT efficiency > 99.9%
- TFT LCD touch screen
- Using advanced IGBT modules
- Full protective functions
- Easy Installation and maintenance
- Precise output power metering
- Multilingual touch screen monitoring and control interface
- Auxiliary heater (optional)
- Max. working altitude at 6000m
- High quality german brand enclosure
- Low voltage ride through, reactive and active power control
- KEMA DK5940, CE certifications



Efficiency Curve:

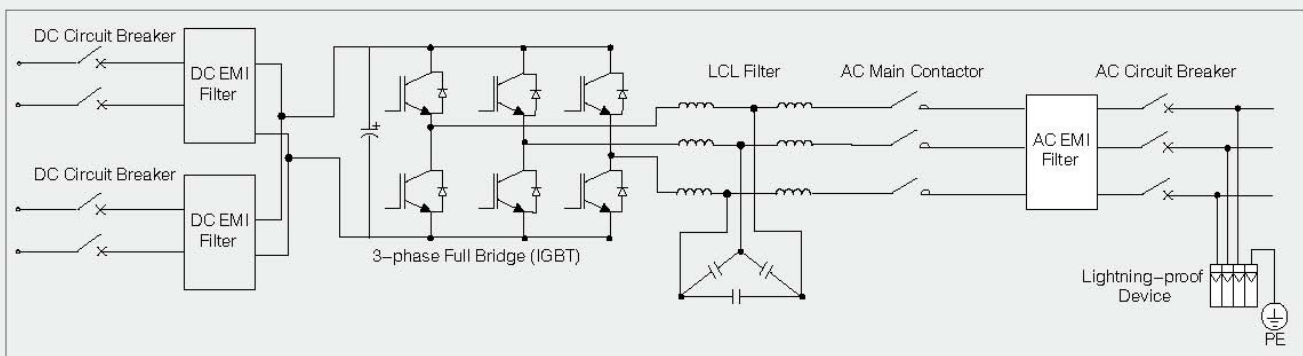


Technical Specifications:

	SG 500KTL
DC SIDE DATA	
Max. DC Voltage	880Vdc
MPP Voltage Range	450~820Vdc
Max. DC Power	550kWp
Max. Input Current	1200A
Max. Number of String	16
AC SIDE DATA	
Rated Output Power	500kW
Rated Grid Voltage	270Vac
Grid Voltage Range	210~310Vac
Rated Grid Frequency	50Hz/60Hz
Grid Frequency Range	47~51.5Hz/57~61.5Hz
Output Current THD	< 3% (at nominal power)
Power Factor	≥0.99 (at nominal power)
SYSTEM	
Max. Efficiency	98.7%
Euro. Efficiency	98.5%
Protection Degree	IP20 (indoor)
Power Consumption at Night	<100W
Operating Temperature	-25~+55°C
Cooling Method	controlled forced-air cooling
Relative Humidity	0~95%, non-condensing
Max. Working Altitude	6000m
DISPLAY AND COMMUNICATIONS	
Display	touch screen LCD
Standard Comm. Interfaces	RS485
Optional Comm. Interfaces	Ethernet/GPRS
MECHANICAL DATA	
Dimensions (WxHxD)	2800x2180x850mm
Weight	1800kg



Circuit Diagram:





SUNGROW POWER SUPPLY CO., LTD.

Add: No.2, Tianhu Road, New and High Technology Industrial
Development Zone,

Tel: Hefei, Anhui, China 230088

Fax: +86 551 532 7834 / 532 7845
+86 551 5327856

Email: info@sungrow.cn

Website: www.sungrowpower.com

